

Morris, Nicola (1997)

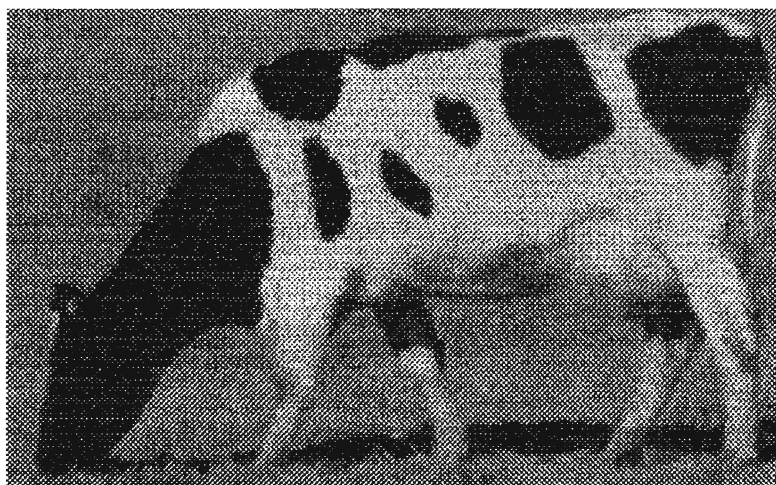
NZ agricultural resources available on the  
Internet

**ALAND**

**AGRICULTURAL RESOURCES**

available on the

**INTERNET**



**1997 Kellogg Project**

**Nicola Morris**

The Internet is one of the most valuable information services available . On it you can find information about absolutely anything you want , sooner or later !

Unfortunately the Internet is also one of the greatest time wasters of the century !

Originally I was going to use the Internet to gain some information to help with my Kellogg Project on agricultural training within New Zealand . As I got deeper and deeper into the net following link a to b to c and then back to a I found it was starting to get confusing . I love playing on the computer and can be relatively easily side-tracked so the end result of my search was that I was spending a lot of time following up interesting links but not necessarily ending with the information I had started out to find .

When I talked with some of my staff and with other Internet users all of whom are fairly recent converts it became obvious that this was quite an issue and often led to frustrations .

Fine if it's a wet day it isn't a bad way to spend some time , but of you want to access some information readily it was frustrating and many farm discussion groups members who I discussed this with stated that this inability to find what they wanted readily tended to put them off using the Internet as an information source .

I decided as a project to try and compile a list of all the New Zealand sites related to agriculture and to present them both in a booklet form and as a bookmark file . The

list won't be exhaustive as sites seem to change weekly if not daily however I believe it will be a good starting point .

I must stress that the expert surfers amongst you won't perhaps find it useful , you will no doubt already have all your bookmarks set , but for the novice I hope it will provide some pointers .

Initially a search was processed for Agricultural research specifically in New Zealand . Identified sites were then tracked and where links were included these were also tracked effectively building database on top of database until a reasonably exhaustive list of sites was compiled and then reduced to eliminate double ups .

A database was built with site addresses and descriptions . Initially I had thought to categorise sites into some key categories such as research , education , dairy and so on but it soon became apparent that many of the sites were generalist rather than specialist .

As a result of these investigation I produced a handbook identifying sites with a brief description of what that site contains and where it can lead and a disk containing bookmarks for the handbook which can be loaded onto your web site and then changed to suit your own personal circumstances .

## **New Zealand Agricultural Resources available on the Internet.**

- **Access NZ - Agriculture** [www.accessnz.co.nz](http://www.accessnz.co.nz)

Basically a search tool from which you can access sites throughout New Zealand according to areas and subjects for example agricultural sites in Northland .

- **AgBrief** [www.inventas.co.nz](http://www.inventas.co.nz)

This is an electronic copy of the newsletter AgBrief . Unfortunately it is unlikely to be their most up-to-date copy . It provides a subscription site for subscribing to the paper version of their newsletter .

The newsletter itself is quite useful with information on the following main areas :

|              |              |                           |
|--------------|--------------|---------------------------|
| Agribusiness | Trade        | Price Trends              |
| Livestock    | Horticulture | Soil, Land, Water, Arable |
| Industry     | Forestry     |                           |

There are also some useful links to other New Zealand and international sites .

- **AgResearch** [www.agresearch.cri.nz](http://www.agresearch.cri.nz)

A very useful site with details on Science , Publications , What's new , Commercial services and other topical features . It provides access to the latest research findings on various subject areas and to the latest publications . It also has a listing of press releases so that it is quite easy to go back and research an interest area .

- **Agri-Fax** [www.agri-fax.xtra.co.nz](http://www.agri-fax.xtra.co.nz)

A regularly updated market information source with details ranging from stock schedules to finance details . It also provides some useful link sites .

- **Ambreed** [www.ambreed.co.nz](http://www.ambreed.co.nz)

An information site on the company and its products .

- **AraNui** [www.lincoln.ac.nz/libr/nz/](http://www.lincoln.ac.nz/libr/nz/)

This is a site developed and maintained by Lincoln University which is a marvellous New Zealand based tool providing access to most New Zealand sites .

- **AssetForestry** [www.asset.co.nz](http://www.asset.co.nz)

A forestry company specialising in consultancy services and in the provision of forestry management software . Provides some very useful links .

- **Baker and Associates** [www.bakerag.co.nz](http://www.bakerag.co.nz)

Information about the farm management consultancy practice and access to publications that they produce ( not up to date ) . Provides a subscription service to these .

- **BeefNewZealand** [www.beef.org.nz](http://www.beef.org.nz)

A very useful and informative site which provides details on a number of beef breeds as well as information on beef breeding and management . It has up to date statistics and reports on ongoing research and development . It also provides some useful beef related links .

- **BOPFert** [www.bopfert.co.nz](http://www.bopfert.co.nz)

An information site on the company which includes distribution and sales sites . It also contains a wealth of product information a question and answer forum and links to fertiliser research sites .

- **Crop and Food Research** [www.crop.cri.nz](http://www.crop.cri.nz)

A crown Research Institute site providing details about the Centre and about the ongoing research being undertaken . It provides access to research articles and fact sheets on some useful topics . It provides links to other related sites .

- **DairyNZ** [www.dairynz.co.nz](http://www.dairynz.co.nz)

An online marketplace for the NZ dairy farmer . It is a site which allows you to jump onto a wealth of information sites . Sites available include research , product information and ordering catalogues .

- **Dept of Conservation** [www.doc.govt.nz](http://www.doc.govt.nz)

A government department site which provides up to date information about conservation matters and about ministry initiatives .

- **Farm Dairy Information Site** [www.hitechdeterg.co.nz/sitemap.htm](http://www.hitechdeterg.co.nz/sitemap.htm)

A fascinating site for those dairy minded people with a host of useful and useless pieces of information . Has the potential to be valuable .

- **Farming with Pictures** [www.farming.co.nz/com/farming/services/fwp](http://www.farming.co.nz/com/farming/services/fwp)

Provides information about the farming resources they produce such as videos and books . Has a useful search facility to access specific subjects .

- **Farmlands** [www.farmlands.co.nz](http://www.farmlands.co.nz)

An information site for the company containing details such as the annual report and monthly newsletter . An online ordering site has also been developed .

- **FarmProfit** [www.farmprofit.co.nz](http://www.farmprofit.co.nz)

Farm management consultancy on the Internet ! By filling in information forms and providing further written information an analysis of various aspects of your farming profitability and indicators will be returned to you

- **Fieldays** [www.fieldays.co.nz](http://www.fieldays.co.nz)

Provides mainly promotional information about the Fieldays . Disappointing to see that it hadn't been updated to promote the 1998 event .

- **Forest Research Institute** [www.fri.cri.nz](http://www.fri.cri.nz)

Another of the Crown Research institutes sites which provides easy access to a wealth of forestry information and links to other forestry related sites .

- **Gallagher** [www.gallagher.co.nz](http://www.gallagher.co.nz)

Contains information on the range of Gallagher products available including pricing and technical specifics .

- **HortResearch** [www.hortnet.co.nz](http://www.hortnet.co.nz)

Contains a good level of detail about horticultural research being undertaken in New Zealand and abroad . Much of the information can only be accessed by subscription , but this is free and all done by email .

- **Infobrok** [www.infobrok.co.nz](http://www.infobrok.co.nz)

Gives access to a veterinary database designed and updated regularly by a retired Massey veterinary lecturer . Also has the facility to send queries .

- **Land Information NZ** [www.linz.govt.nz](http://www.linz.govt.nz)

A wealth of information some of which has farming applications e.g. geographical features .

- **Landcare Research** [www.landcare.cri.nz](http://www.landcare.cri.nz)

Gives a general information rundown on what they do and access to some useful articles and newsletters .

- **Livestock Improvement** [www.lic.co.nz](http://www.lic.co.nz)

Good information source about what LIC does and facilities and services available .

- **MafQuality** [www.mqm.govt.nz](http://www.mqm.govt.nz)

A good introduction to the service and an outline of what it does and also services that it can provide .

- **Massey University** [www.massey.ac.nz](http://www.massey.ac.nz)

A home page from which you can source information from the whole university resources . Access to departments and faculties , research findings and reports , library access as well as resources specifically for students .

- **MAF** [www.maf.govt.nz](http://www.maf.govt.nz)

A very powerful site . In addition to a raft of MAF specific details it also has a very good set of links to other sites . Access is also available to a range of MAF publications .

- **MIRINZ** [www.mirinz.org.nz](http://www.mirinz.org.nz)

Gives information about the various sections of MIRINZ and what roles and functions they have .

- **New Zealand Meat Producers Board** [www.nzmeat.co.nz](http://www.nzmeat.co.nz)

Good source of information about what the board does as well as access to some of the reports they produce , market information and contacts .

- **NIWA** [www.niwa.cri.nz](http://www.niwa.cri.nz)

Gives a rundown on what NIWA does but also provides some quite valuable information which has agricultural applications .

- **NZ Primary Products Information**      [www.nzinformation.co.nz/  
primary industry](http://www.nzinformation.co.nz/primary%20industry)

Almost a marketing site where you enter details about what farm information you would like and receive an email response .

- **NZ Society of Animal Production**      [www.nzsap.rsnz.govt.nz](http://www.nzsap.rsnz.govt.nz)

Information about the role of the society , meetings , publications and subscription details . A good search facility of publications .

- **Ostrich New Zealand**      [www.oenz.co.nz](http://www.oenz.co.nz)

Whilst primarily an advertising site it contains some very useful information at an entry level .

- **Profeed**      [www.profeedor.co.nz](http://www.profeedor.co.nz)

Provides product information .

- **Royal Society of NZ**      [www.rsnz.govt.nz](http://www.rsnz.govt.nz)

Contains a wealth of scientific information some of which is applicable to Agriculture

- **Sheep Research Foundation**      [www.sheepresearch.co.nz](http://www.sheepresearch.co.nz)

A very useful site with a powerful search facility to track down research findings on a specific subject and to read abstracts on published research .

- **Sheepbase** [www.dirk.invermay.cri.nz](http://www.dirk.invermay.cri.nz)

Information available about genetic research programs .

- **Statistics New Zealand** [www.stats.govt.nz](http://www.stats.govt.nz)

Access to limited census information and subscriptions to get other statistical products .

- **Stock Co Financial** [www.stockco.co.nz](http://www.stockco.co.nz)

A livestock trading facility which provides information on what the company offers , cashflow implications , information about decision making for key stock decisions .

- **StockNet** [www.stocknet.co.nz](http://www.stocknet.co.nz)

A useful site giving details on stock and produce prices and markets as well as details on how to contact agents and list stock for sale .

- **StockRank** [www.stock.rank.co.nz](http://www.stock.rank.co.nz)

A facility run by Ag NZ consultants where you can enter in scanning and docking information and receive summaries back comparing your results to others .

- **Small Farmer organisation** [www.smallfarmer.org.nz](http://www.smallfarmer.org.nz)

A good information source fro those considering a rural lifestyle . Provides contact details for joining access to their newsletter and some useful links .

- **TreeCropper** [www.purangi.co.nz/tree](http://www.purangi.co.nz/tree)

Similar format to the magazine with useful information for members and others . Has some good links and contacts .

- **Wools of New Zealand** [www.iweb.net/nzwool](http://www.iweb.net/nzwool)

A promotional site about products offered . Very few details .

- **Wool Research Organisation** [www.wronz.org.nz](http://www.wronz.org.nz)

Useful information about what the organisation is seeking to do and research findings available as well as information on what research is being undertaken .

The following home pages have been reproduced to give those who do not yet have an Internet connection the chance to see what various sites contain .

A full bookmark is available if required either on disk or via email .



[About AgResearch](#)

[Science](#)

[Publications](#)

[Jobs](#)

[Search This Site](#)

[What's New](#)

[Commercial Services](#)

[Links](#)

[Feedback](#)

[Disclaimer](#)

**AgResearch science – the bridge between the food, fibre and biotechnology products of New Zealand's pastoral industries and the consumer trends of the 21st century**



[webmaster@agresearch.cri.nz](mailto:webmaster@agresearch.cri.nz)

Thursday August 14, 1997



Providing extensive information on prices being received by NZ farmers and also on overseas returns for New Zealand's pastoral products.

Try our [NEW Beef Price Calculator](#)

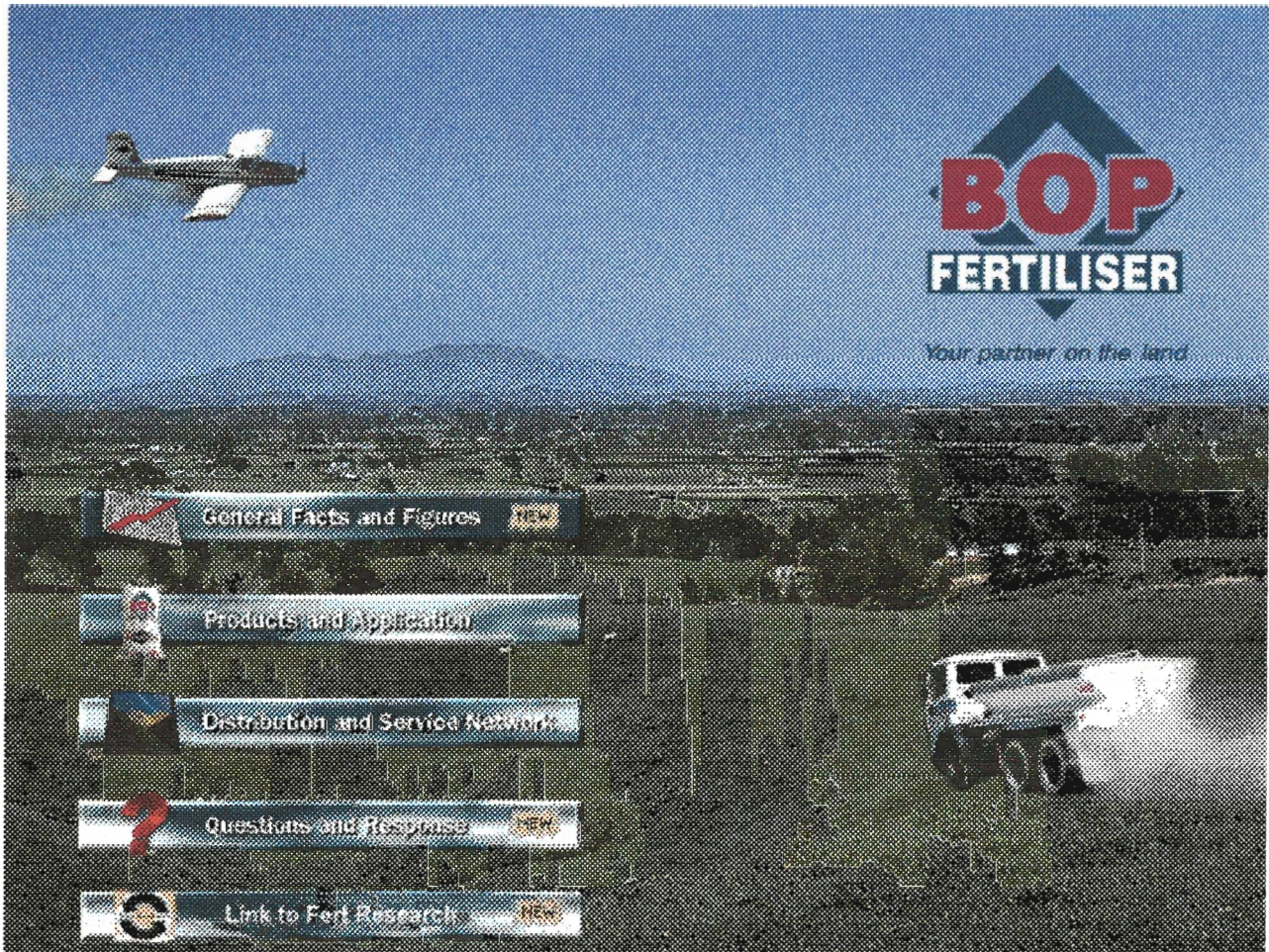
## This Week's Snapshot

|   | This Week | One Month Ago | One Year Ago |
|---|-----------|---------------|--------------|
| <a href="#">Lamb 15kg (\$/head)</a>           | 48.33     | 47.44         | 47.56        |
| <a href="#">Steer 280kg (c/kg)</a>            | 198       | 201           | 184          |
| <a href="#">Stag 60kg (c/kg)</a>              | 577       | 644           | 817          |
| <a href="#">Wool 35m (c/kg clean)</a>         | 457       | 464           | 470          |
| <a href="#">Butter (\$/kg FOB)</a>            | 2.44      | 2.44          | 2.03         |
| <a href="#">Wheat 11% (\$/tonne)</a>          | 278       | 270           | 296          |
| <a href="#">Pine Logs (K grade: \$/tonne)</a> | 71        | 71            | 60           |
| <a href="#">Rural Mortgage Rate (%)</a>       | 9.4       | 9.6           | 11.0         |

updated October 18, 1997

**E-mail** us for the cost of the information you need.

[HOME](#) [ABOUT AGRI-FAX](#) [LAMB,BEEF,DEER](#) [WOOL,DAIRY,WHEAT](#) [RURAL FINANCE](#) [FORESTRY](#) [AG LINKS](#)



[Facts & Figures](#) <sup>NEW</sup> | 
 [Products & Applications](#) | 
 [Distribution & Service](#) | 
 [Questions & Responses](#) <sup>NEW</sup> | 
 [Link to Fert Research](#) <sup>NEW</sup>

## BOP Fertiliser Limited <sup>NEW</sup>

BOP Fertiliser Limited is New Zealand's largest single works manufacturer of Phosphate fertilisers. In the 1996-97 year (June to May), BOP Fertiliser Limited sold 678,104 tonnes of product, one third of the total New Zealand sales. Subsidiary companies include Petrochem Limited (Ammonia/Urea manufacturers producing 230,000 tonnes of granulated Urea 1995-96), Southfert Limited (fertiliser manufacturers), and Superair Limited (Aerial spreading operators).

### ◆ Our Mission

To produce the highest quality products to satisfy our customers' needs. We will do this while maintaining safety as our number one priority. At all times we will endeavour to minimise any adverse effects of our operation on the environment.



[Contacts](#)

[Hot News](#)

[Library](#)

[Links](#)

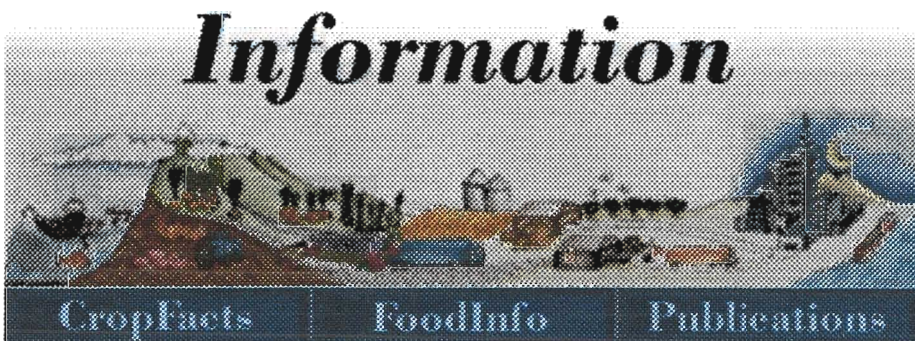
[Cyberguide  
to Flour  
Milling &  
Baking](#)

[Sign our  
Visitors  
Book](#)

[Webmaster](#)

[Staff](#)

## Welcome to the New Zealand Institute for Crop & Food Research Ltd



New Zealand Institute for Crop & Food Research, Private Bag 4704,  
Christchurch, New Zealand. Telephone: 643 325 6400, Facsimile: 643 325 2074.

While every care has been taken when preparing this document, no liability will be accepted by the New Zealand Institute for Crop & Food Research Limited for any loss or damage suffered as a result of applying the information contained in this document.

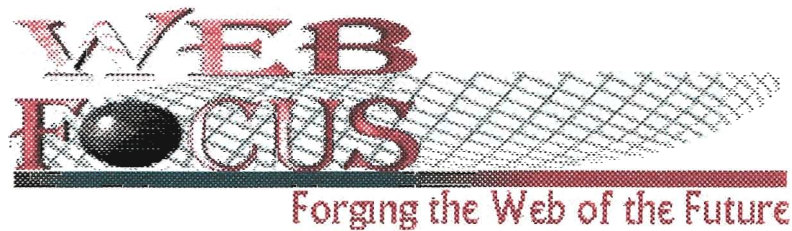
© 1996-97 The New Zealand Institute for Crop & Food Research Ltd, Christchurch, New Zealand.

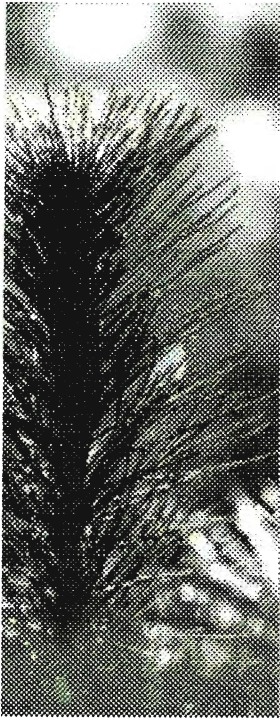


*"Everyone can shop  
at Farmlands"*



*Note: These Pages are Designed to be viewed with an 800x600 resolution screen with 16bit Hi-colour(  
If your Browser does not display these pages correctly upgrade to one of the following brows  
[Netscape 3.0](#) | [Microsoft IE 3.0](#)*





## Welcome to...



- ▶ [General Information](#)
- ▶ [Research](#)
- ▶ [Vacancies](#)
- ▶ [Products & Services](#)
- ▶ [Events](#)
- ▶ [Subsidiaries](#)
- ▶ [Links](#)
- ▶ [Index](#)

[<Text-Only Home Page>](#)

[<Disclaimer>](#)

Last updated: 6 October 1997  
<http://www.fri.cri.nz/frihome.htm>

Email: [Webmaster@fri.cri.nz](mailto:Webmaster@fri.cri.nz)